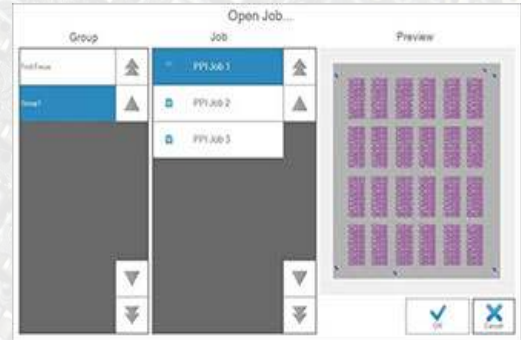


**PROSYS** is an Intuitive graphical user interface that offers unmatched ease of use for both operators and process engineers to control ProVia Laser Drilling and Cutting Systems.



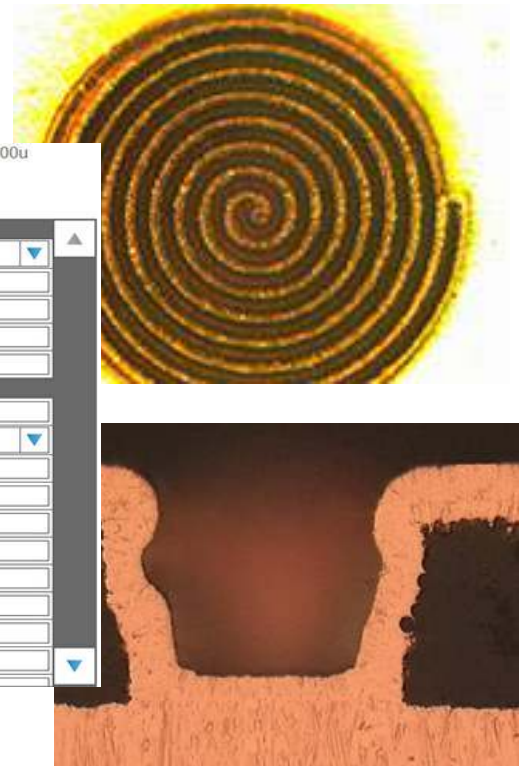
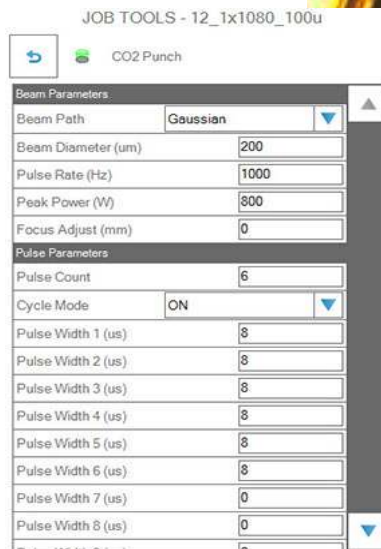
# ProSys™ Software

ProVia Laser Via Drilling Solutions

PPI Systems laser drilling control software designed for easy job creation and process control.

## Features

- Simple operator interface
- Process map
- Fully automatic run-time calibration
- Real-time system monitoring
- Touchscreen (full HD)
- Automated file conversion and job creation
- Compatible with industry standard file formats
- File conversion automation
- Automatic multi-step, multi-pass processing
- User-type access levels with password protection
- Maintenance Tracker
- Full system diagnostics and data logging
- Remote access through the internet
- Multi-language selectable
- Windows 10 64-bit architecture
- Ready for Industry 4.0



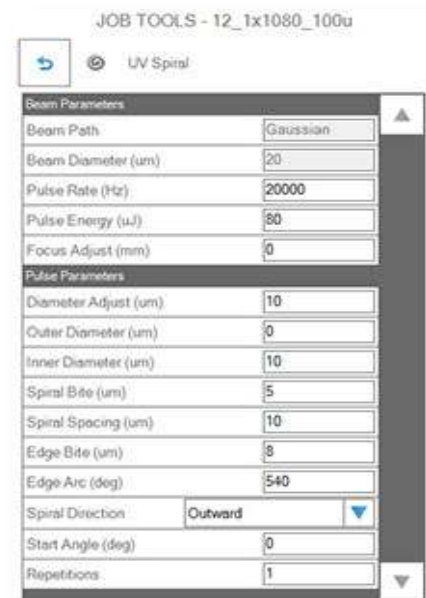
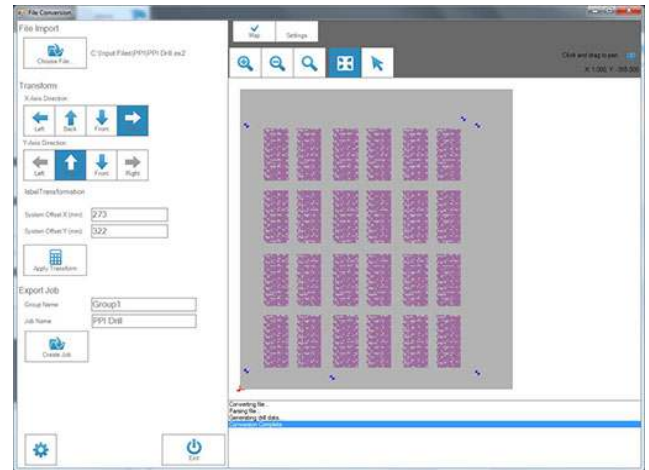
# PPI

# Job Creation

- A stand-alone utility that performs file conversion and job generation
- Provides a graphical map of job features and facilitates panel orientation
- Full support for industry standard input file formats including mixed drill and rout tasks within the same job

# Process Control

- Independently control laser pulse energy and repetition rate.
- Drill process tools allow precise control over bite size, spiral spacing, cut direction, via size fine adjust, inner diameter, perimeter revolutions, and repetitions.
- Hole sizes are not limited by the laser spot size.
- Punch, spiral or rout with both UV and CO<sub>2</sub> laser process tools.
- Multi-step and multi-pass processing provides unlimited combinations of operations for ultimate flexibility and process optimization.
- Quick tool process parameter evaluation using the Process Test array functions for both drilling and routing tools.



# About PPI Systems

As a leading producer of laser material processing solutions since 2003, PPI Systems is passionate about providing world-class equipment and support to its customers. Based in Ottawa, Canada, PPI designs and manufactures turn-key laser drilling and trimming systems for the electronic interconnect and component markets from its 23,000 square foot production facility.



# PPI